



DAVENPORT
PARKS & RECREATION

Davenport Junior Theatre

Facility Overview

1/15/2024



Davenport Junior Theatre

Annie Wittenmyer Campus

Synopsis – Since 1978 when initial renovations began, Junior Theatre has been housed at Annie Wittenmyer for the past 45 years. Theatre, Dance, Camps, Mainstage, Rentals, Workshops and all the periphery support areas (Costume Shop, Scenic Storage, Scene Shop, Props House, Paint Shop, etc) have built up to support program activities. Without space to house these periphery areas to support programming efforts, programming would be a shell of its current state.

In FY 10, Junior Theatre revenue was \$108,179. In FY 23, Revenue was \$316,594.

Enrollments include nearly 2,000 with students from 30+ cities and towns. This does not include our non-profit partner (JT Inc's) mainstage programs which serves kids and the communities. Nor the many workshops we host onsite throughout the year.

Finding accommodation to house program in an alternative space will be a great challenge. We have evolved into this particular space, maximizing it to the advantage of the program and patrons.



SUMMARY INFORMATION

- Total Square Footage, including theatre, cottages and workshop spaces.
 - 43,617 feet
 - **Total = 43,617**
- Buildings in Active Use
 - Cottages = 10
 - Theatre = 1
 - Shop Building = 1
 - **Total = 12**
- Programming Spaces (Classrooms)
 - Theatre Stage = 1
 - Acting Studios = 4
 - Dance Studios = 2
 - Musical Theatre Studios = 1
 - Tumbling Studio = 1
 - Theatre Tech Studio = 1
 - **Total = 10**
 - *Green Space* is heavily utilized by our camps. With over 96 students in a Performing Arts Camp, a safe green space is a crucial component to camp success.
- Periphery Support Spaces
 - Main Theatre Office (5 work stations)
 - Main Dance Offices (2 works stations)
 - Cottage 7 Offices (3 work stations)
 - Lobby / Classroom waiting areas = (8 by classrooms)
 - Junior Theatre Museum (cottage 13, ribbon cutting 2021)
 - Costume Shop (cottage 14, part of 13)
 - Props House (cottage 9)
 - Scenic Storage (cottage 8)
 - Paint Shop (upper cottage 8)
 - Makeup Studio, Dressing Rooms (lower level theatre)
 - Lighting Loft Storage (upper theatre)
 - Audio & Special Effects Storage (cottage 12)
 - Main Meeting Room (cottage 12)

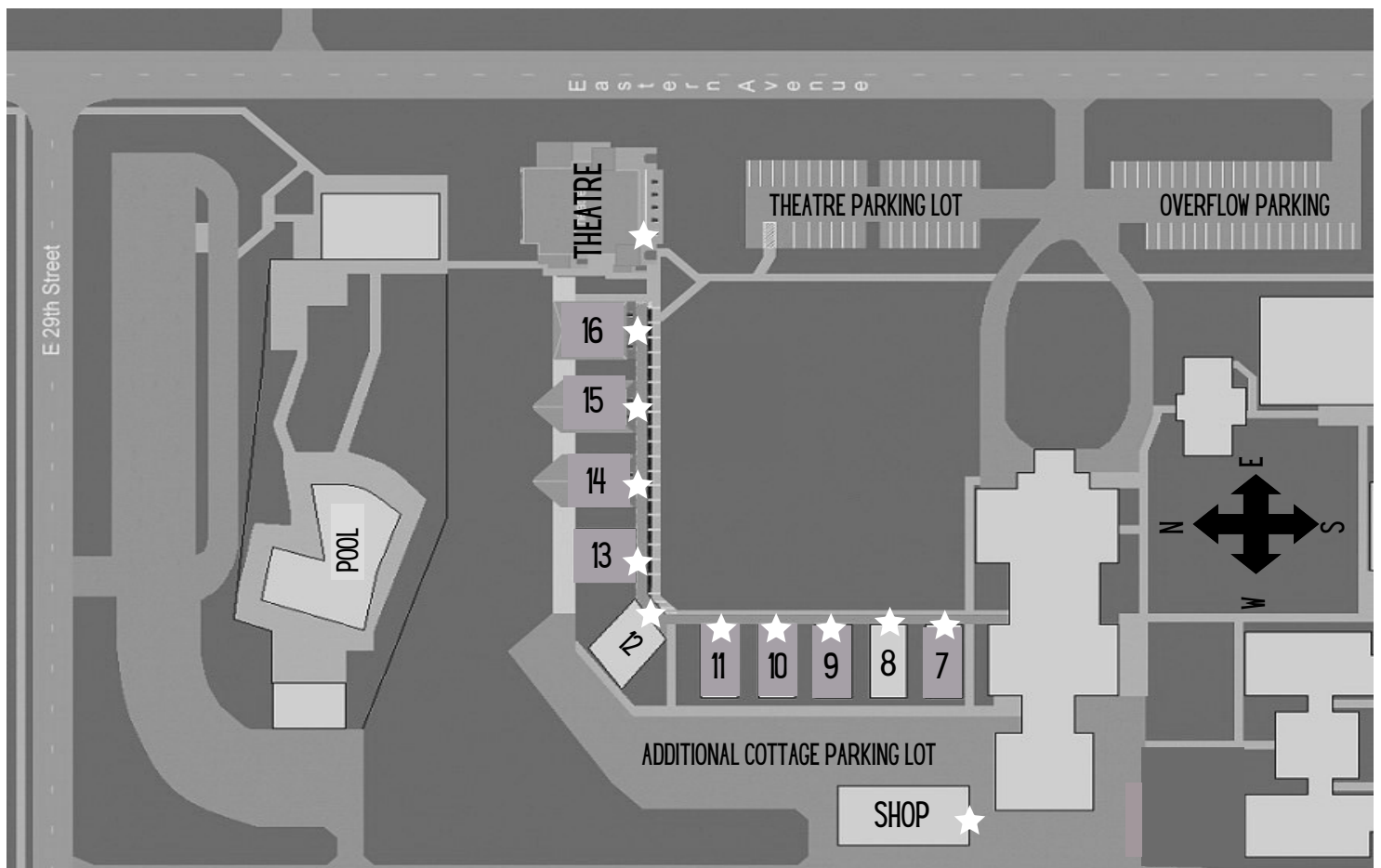
Mary Fluhrer-Nighswander Theatre

Synopsis – The Nighswander Theatre was renovated from 1978-81, converted from chapel, making a permanent home for the 30 year old Junior Theatre Program. It took nearly 15 years to raise the capital funds and renovate the site. The space was renovated again in 2017. Today the facility hosts rentals, programs, and productions year-round. This unique mid-sized theatre is a gem of the Quad Cities. The main level of the theatre is ADA accessible.

The facility also is the main level for the DJT Dance program. The lower level has been renovated time and again over the decades to serve youth with dance, as well as adding dressing rooms and improving other areas.

- Square Footage
 - 5,270 - Main Level (62x85)
 - 1,302 - Upper Level (62x21)
 - 5,270 - Lower Level
 - **11,842 Total**
- Main Level
 - Main Theatre Lobby, includes large box office with storage
 - Two Restrooms
 - Two Storage closets
 - Main Theatre, seats 375 (new seating 2017)
 - Mainstage (45' wide x 30' deep)
 - Extensive storage under mainstage
 - Backstage areas
 - Green room
- Upper Level
 - Balcony
 - Tech Booth
 - Lighting Loft Storage (above Green Room)
 - Catwalk, lighting access (all LED Cat 5 network based lighting and constant power outlets, with traditional dimmer options)
- Lower Level
 - Dance Lobby, seats 30 with play area
 - Shoe & Leotard exchange area
 - Office - Dance Programs Coordinator
 - Dance Studio 1 - (45' x 30')
 - Dance Studio 2 - (35' x 30')
 - 2 Dressing Rooms
 - 3 Storage Closets/Areas
 - Makeup Studio / Waiting Space
 - Air-handler room / storage

Davenport Junior Theatre



Facility Usage Overview

Theatre: Mainstage, Box Office, Green Room, Lighting Loft, Tech Booth

Lower Level of Theatre: 2 Dance Studios, Makeup Studio, Shoe & Leotard Exchange, Dance Coordinator Office, Dance Costume Storage

Cottage 16: Acting Studio, Musical Theatre Studio, AmeriCorps Office, Sound Lab

Cottage 15: Main Office, Teacher Prep Area, Theatre Coordinator Office, Performing Arts Supervisor Office, Acting Studio (Pre-K)

Cottage 14: Costume Storage & Shop, Costume Coordinator Office, Laundry Facilities

Cottage 13: DJT History Museum, Costume Storage

Cottage 12: *Technical Design Studio, Meeting Space, Puppetry Lab, Facility Coordinator Office (Closed to Tour)*

Cottage 11: Acting Studio, Camp & Workshop Coordinator Office, Camp Storage

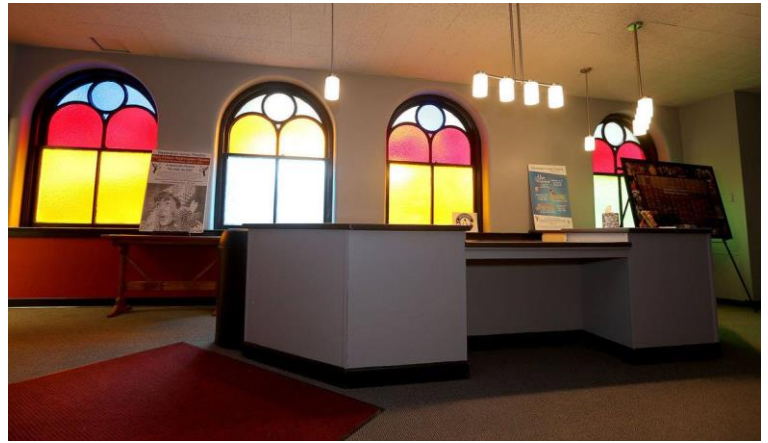
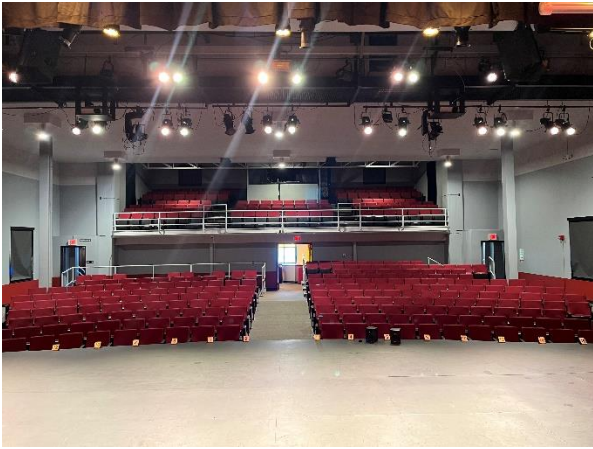
Cottage 10: Tumble Studio, Event Storage

Cottage 9: Props Storage, Props Build Area, Scenic Storage

Cottage 8: *Scenic Storage & Paint Shop (Closed to Tour)*

Cottage 7: Mainstage Rehearsal Studio (JTI), Artistic Director Office (JTI), Production Manager Office (JTI), DJT Library

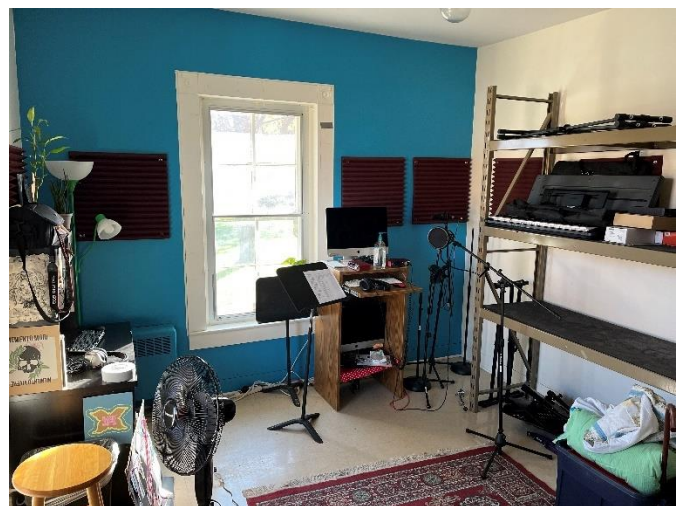
Shop: *Large Scenic Storage, Lumber Storage, Scenic Build Area (Closed to Tour)*



Cottage 16 (2 Acting Studios, Sound Studio)

Primary use is acting studios, recording studio, lobby areas, AmeriCorps Office and storage.

- Square Footage
 - 1,500 - Main Level
 - 1,500 - Upper Level
 - **3,000 Total**
- Main Level
 - Acting Studio
 - Lobby Space
 - Restroom
 - 2 Storage Closets
- Upper Level
 - Acting Studio
 - Lobby Space
 - Restroom
 - 3 Storage Closets
 - Sound Studio
 - Office – AmeriCorps



Cottage 15 (main office)

Primary use is programming main office, lobby spaces, offices, acting studio.

- Square Footage
 - 1,450 - Main Level
 - 1,450 - Upper Level
 - **2,900 Total**
- Main Level
 - Main Lobby Waiting Area (seats 18)
 - Secondary Lobby Area (seats 10)
 - Front Desk
 - Office - Teacher work Station and Prep Area
 - Office - Theatre Program Coordinator
 - Office - Performing Arts Supervisor
 - 4 Storage Closets
 - Restroom
 - Extended hallway storage
- Upper Level
 - Acting Studio
 - Office - Facility Coordinator
 - Restroom
 - 2 Storage Closets
 - Special Effects Storage room



Cottage 14 (Costume Shop)

Primary use is costume storage and costume shop build areas. Houses over 10,000 organized costumes. Cottage can also house our design class (costume creation).

- Square Footage
 - 1,450 - Main Level
 - 1,450 - Upper Level
 - **2,900 Total**
- Main Level
 - Main Costume Distribution Area (front room) to manage flow of costumes in and out.
 - Office – Costume Coordinator
 - 4 Storage Closets
 - Dye Sink Room
 - Hat Room
 - Custom built shelving to maximize space
 - Construction Area, craft table
 - Restroom
- Upper Level
 - Costume Rack Storage area (15 racks)
 - Fabric Storage (Custom racks)
 - Costume Workroom (cutting table, storage)
 - Sewing Room (2 machines & stations, supply storage)
 - 2 Storage Closets



Cottage 13 (Museum, Costume Storage)

Primary use is museum on the main floor. Created over two years of collaboration, the DJT museum opened in Summer of 2022. This self-guided museum shares 70+ years of DJT's rich heritage. Upper level of cottage is extended costume storage.

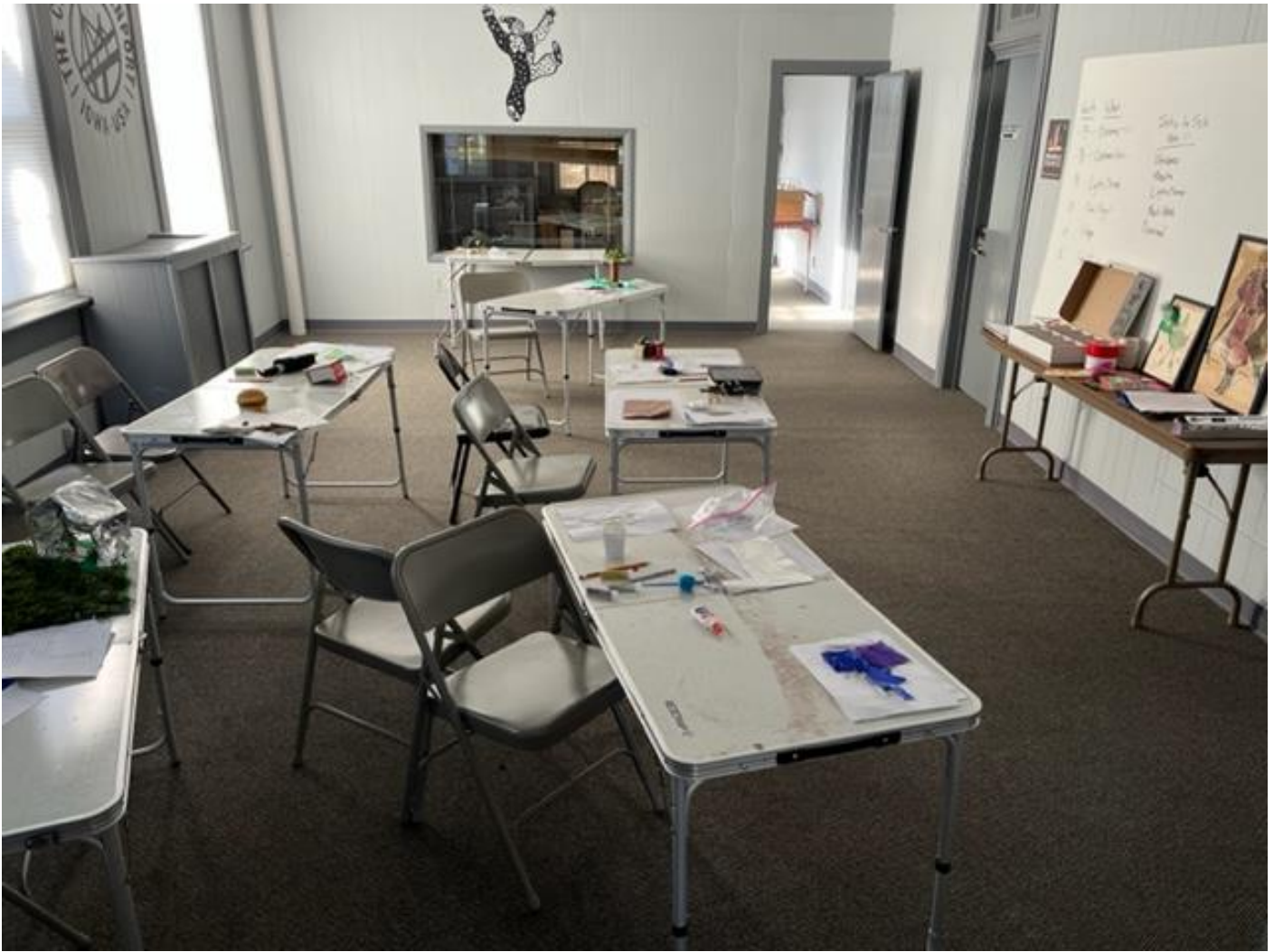
- Square Footage
 - 1,450 - Main Level
 - 1,450 - Upper Level
 - **2,900 Total**
- Main Level
 - Museum
 - Restroom
- Upper Level
 - Costume Storage
 - Restroom
 - Sink Area



Cottage 12 (Design Classroom, Meeting Rooms, Storage)

Primary use is Design Classroom & storage for design classes. Puppetry storage, meeting rooms, storage, and additional office spaces.

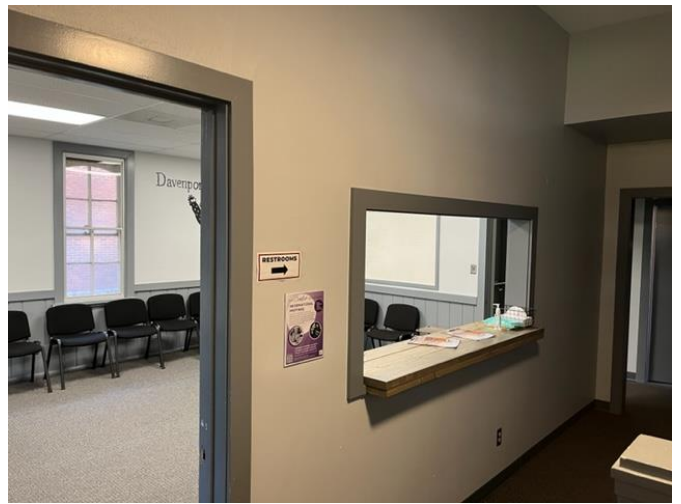
- Square Footage
 - 1,926 - Main Level
 - 1,926 - Upper Level
 - **3,825 Total**
- Main Level
 - Lobby Waiting Area (seats 12)
 - Design Class Studio
 - Design Storage
 - Puppetry Lab/Storage
 - 2 – Restrooms
 - 1 – Storage Closet
- Upper Level
 - Sound & Special Effects Equipment Storage
 - Main Conference Room
 - Small Meeting Room
 - Kitchenette Break Room
 - 1 – Office Space
 - Restroom
 - 2 – Storage Closets



Cottage 11 (Acting Studio, Camp Area)

Primary use is an Acting Studio and Camp Staging Area. Cottage houses all camp supplies and is also used as a breakroom for staff during camp weeks.

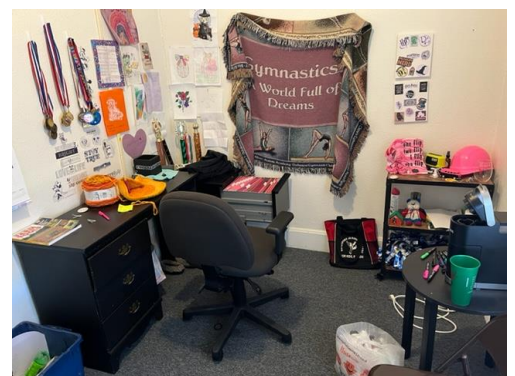
- Square Footage
 - 1,450 - Main Level
 - 1,450 - Upper Level
 - **2,900 Total**
- Main Level
 - Main Lobby Waiting Area (seats 18)
 - Camp Storage & Supplies
 - 2 Storage Areas
 - Restroom
- Upper Level
 - Acting Studio
 - Staging Area Room (props & costumes)
 - Restroom
 - 2 – Storage Closets



Cottage 10 (Tumbling Studio, Special Event Area)

Primary use is as a Tumble Studio, Leotard Exchange and Special Event Staging Area. Cottage houses all special event supplies.

- Square Footage
 - 1,450 - Main Level
 - 1,450 - Upper Level
 - **2,900 Total**
- Main Level
 - Main Lobby Waiting Area (seats 18)
 - Youth Waiting Area (games & activities)
 - Leotard Exchange Area
 - Leotard Changing Room
 - 1 Storage Closet
 - Restroom
 - Special Events Supply Storage
- Upper Level
 - Tumble Studio
 - Staging Area Room (water cooler, costumes)
 - Restroom
 - Office – Tumble Instructors



Cottage 9 (Props House)

Primary use of this cottage is to store and create all props used in classes, camps, shows, etc. Also houses some scenery.

- Square Footage
 - 1,450 - Main Level
 - 1,450 - Upper Level
 - **2,900 Total**
- Main Level
 - Props Storage Throughout
 - 2 – Storage Closets
- Upper Level
 - Props Workshop Area (custom designed room for building props)
 - Props Storage
 - Chair Storage
 - Greenery Storage
 - Restroom
 - 1 – Storage Closet



Cottage 8 (Paint Shop & Scenic Storage)

Primary use of this cottage is to store all scenic items and have a dedicated space to painting and preparation of all scenic items.

- Square Footage
 - 1,450 - Main Level
 - 1,450 - Upper Level
 - **2,900 Total**
- Main Level
 - Scenic Storage throughout lower level.
 - 2 – Storage Closets
- Upper Level
 - Paint Shop in main space upstairs
 - Scenic Storage in other rooms
 - Restroom



Cottage 7 (Acting Studio, JT Inc space, Overflow offices)

Primary use of this cottage is an Acting Studio space, Junior Theatre Inc office/meeting space, library, archival storage, and DPR Emergency Flood overflow offices.

- Square Footage
 - 1,450 - Main Level
 - 1,450 - Upper Level
 - **2,900 Total**
- Main Level
 - Lobby Area (seats 15)
 - Library
 - Offices – 3 additional emergency office spaces
 - Archival Records Storage
- Upper Level
 - Acting Studio (Board Meeting Room)
 - Office Stage Manager
 - Staging Area / Water Room
 - 2 – Storage Closets



Carpenter Shop Building in Cottage Parking Lot (Large Scenic Storage, Build Shop)

Primary use of this space is large scenic storage items in upper level and large build shop in lower level for creation of scenery and other program items.

- Square Footage
 - 625 - Upper Level (storage)
 - 1,125 - Lower Level (workshop build space)
 - **1,750 Total**
- Upper Level
 - Large scenic Storage – Allows to keep scenic items of large size (10' to 16' height) and of large width.
- Lower Level
 - Build Shop – This shop space has proven essential to storing tools and building items needed for programs & productions. We used to build inside the theatre, causing major dust and damage.
 - Large Build Table
 - Lumber Storage
 - Tool Storage
 - Hardware Storage

